

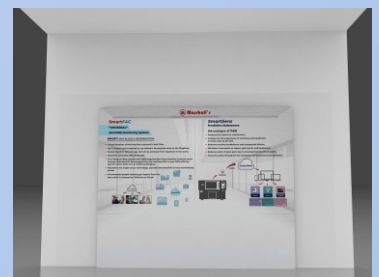
# **BREAKING NEWS**



&



have jointly Launched India's 1st comprehensive TRAINING Program for Industry 4.0 technologies at MACE, Gurgaon.

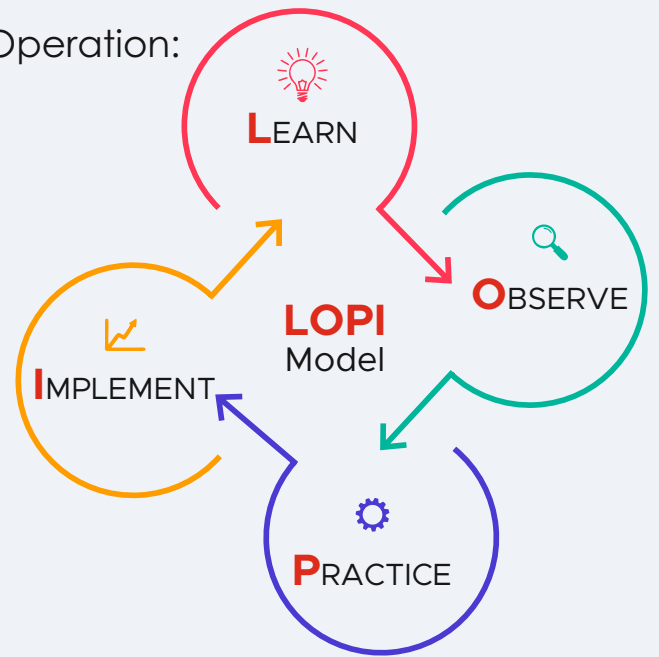


Training will cover 3 critical areas of Machine Operation:

- **PRODUCTIVITY**
- **QUALITY**
- **HEALTH**

based on **LOPI** methodology.

- ↻ **L**earn
- ↻ **O**bserve
- ↻ **P**ractice
- ↻ **I**mplement



## Four types of machining are equipped for practicals



**VMC (Vertical Machining Center)**

**UMM**  
(Universal Machine Monitoring)



**PdM**  
(Predictive Maintenance)



**CNC Turning Center**

**SmartCorrect ECO**  
Gauging Station with Auto-Correction



**PdM**



**UMM**



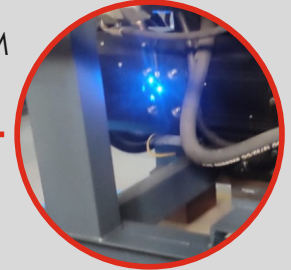


**Injection Moulding Machine**

UMM



PdM



**Hydraulic Press**

UMM



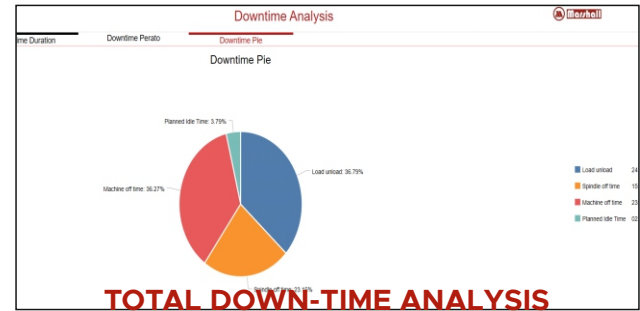
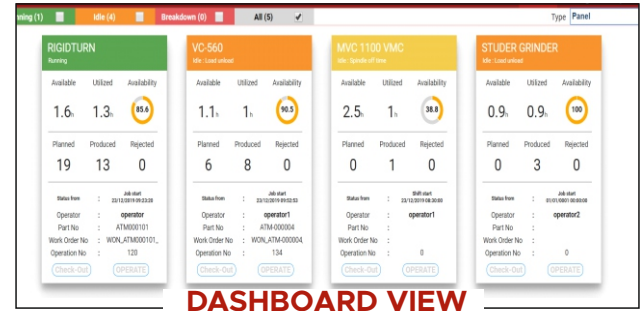
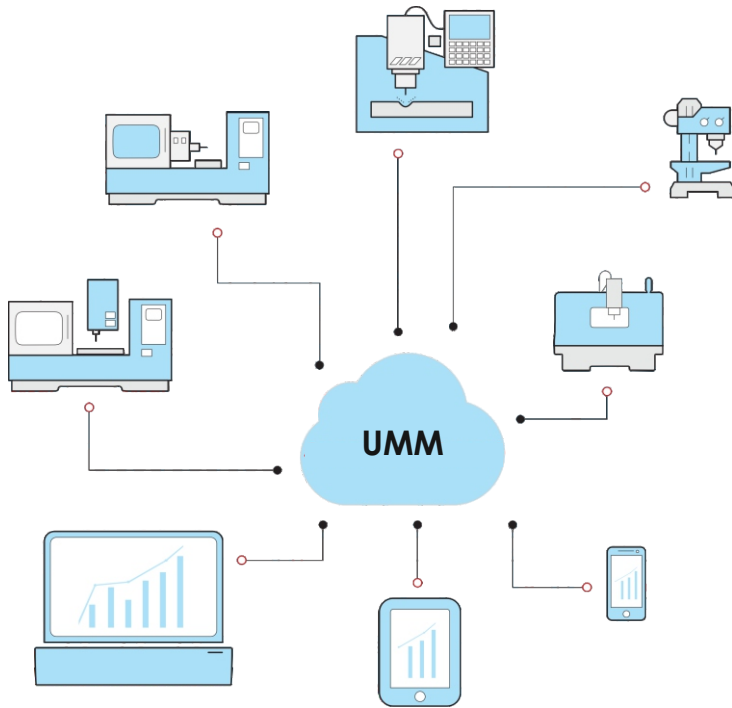
PdM



## **ESSENTIAL Industry 4.0 Technology #1** **for PRODUCTIVITY**

### **Universal Machine Monitoring (UMM)**

- ↻ Actual Situation of the shop floor captured in Real Time.
- ↻ Eliminates duties of Supervisors to note hourly and daily production.
- ↻ No IT infrastructure required to use software.
- ↻ No physical wires on the Shopfloor.
- ↻ Secure Cloud for data storage and can be accessed from anywhere in the world.
- ↻ All Plants data can be stored on the common cloud platform OR in-house store.
- ↻ Real Time alerts like SMS and Emails.



## EXAMPLE OF SUCCESS STORY

 **18%** Increase in Productivity

 **99%** Data Accuracy

 **3** Months Return on Investment

 **30%** Reduction in accidents & tool breakage in Night Shift

## ESSENTIAL Industry 4.0 Technology #2 for MACHINE HEALTH

### Predictive Maintenance (PdM)

#### PRINCIPLES:

- Symptoms are used to detect potential problem
- Detection of symptoms is system based, & independent of human judgement
- Single or multiple symptoms (variables) may be used to detect problem with the help of rules or algorithms.
- Symptoms are detected with **IoT enabled SENSORS**

#### Predictive Maintenance Advantages

- Detection of 'Potential' problems ensures that corrective action takes place before the 'Potential Problem' causes breakdown.
- Huge saving in time and money

# ESSENTIAL Industry 4.0 Technology #3

for **QUALITY**

**CLAP** (Closed Loop Auto-corrected Production)  
ELIMINATES THE 3 HUMAN ERRORS

## The Problem : errors by operators

Machine Shops are dependent on Skilled Operators & Inspectors to ensure Quality of manufactured Jobs.



**Error #1**  
**Measurement**

Error due to non calibration or carelessness



**Error #2**  
**Judgement**

Which dimension to correct & how much?

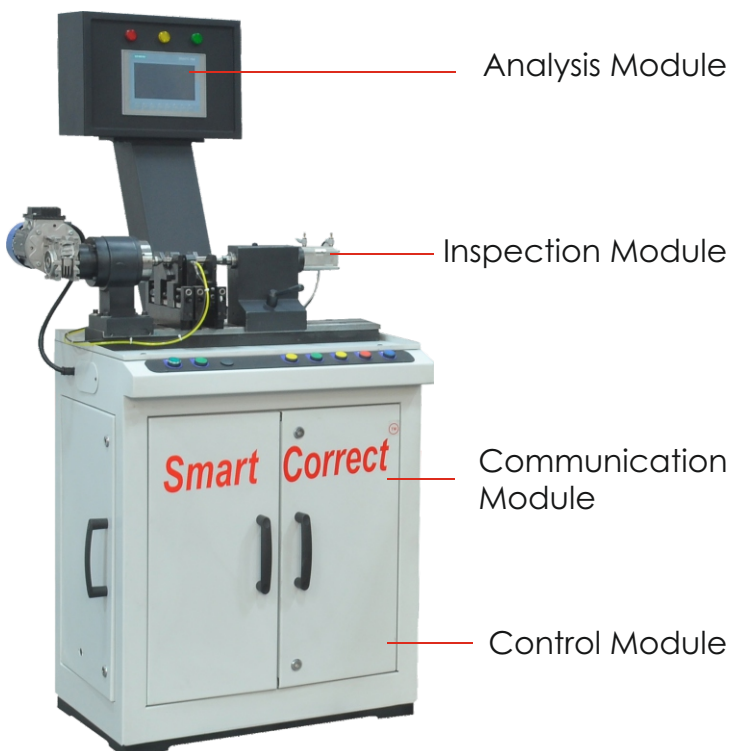


**Error #3**  
**Input**

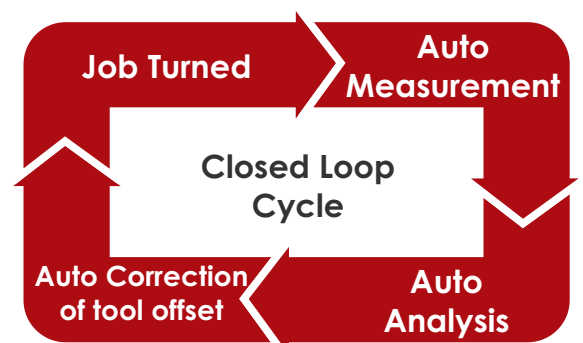
e.g. 0.04 value given in place of 0.004

## Result: Defectives

## The Solution



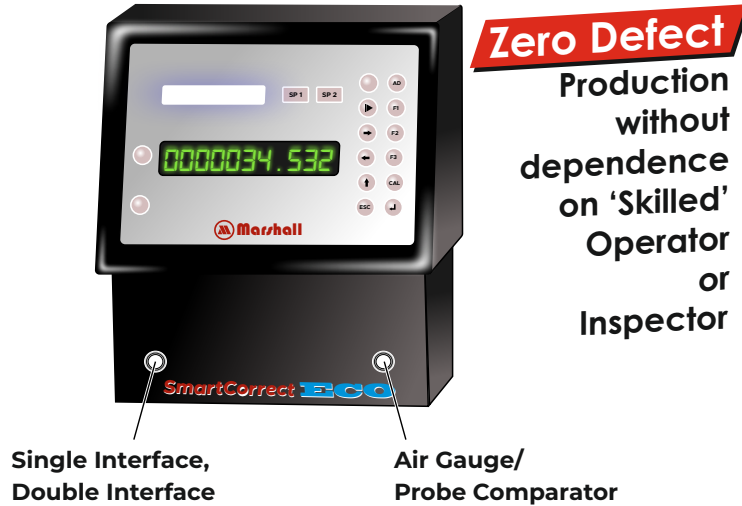
**SmartCorrect<sup>®</sup>** Gaging Station for Autocorrection of machine offsets



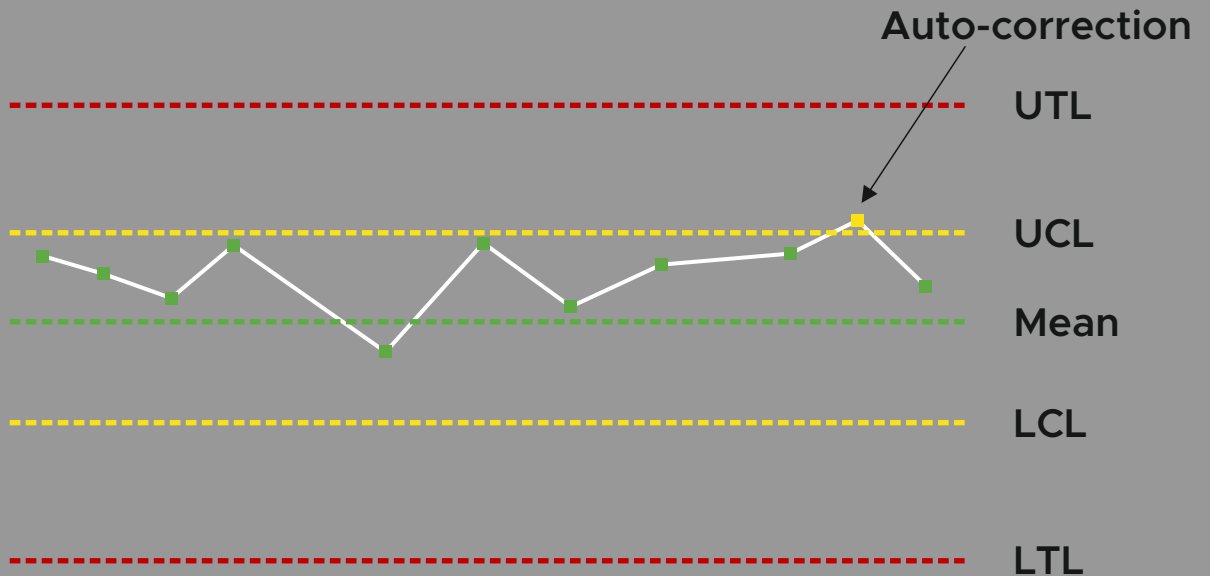
# SmartCorrect **ECO**

## Gauging Station with Auto-correction

- **SmartCorrect-ECO** is an economical auto-gauging station which checks one most important dimension of a job and auto-corrects the CNC to produce 'near **ZERO**' defectives.



The advanced ALGORITHMS in **SmartCorrect-ECO** software calculate and automatically correct tool **wear** offsets to keep size close to the Mean of tolerance **limit**



### Head Office & Works

C 86, Phase-V, Focal Point, Ludhiana 141 010 India

Phone: +91 161 5012406, 5012407, 5019648

Email: [headoffice@marshallcnc.com](mailto:headoffice@marshallcnc.com)

### Automated Solutions Division (Unit II)

D-116A, Phase-V, Focal Point, Ludhiana-141010. INDIA

[marshallcnc.com](http://marshallcnc.com) [marshallcnc.in](http://marshallcnc.in)



126, Sector-4, IMT Manesar,

Gurgaon-122052

[dkdewan@maruti.co.in](mailto:dkdewan@maruti.co.in)

[www.marutimace.in](http://www.marutimace.in)